

**STUDY ON THE LEVEL OF SOCIAL MATURITY AMONG THE
LOWER SECONDARY SCHOOL STUDENTS OF MATIA BLOCK
OF GOALPARA DISTRICT, ASSAM**

Smriti Rekha Das

Research Scholar

Department of Education Mahapurusha Srimanta Sankaradeva

Viswavidyalaya, Nagaon

PIN-783125

Abstract: *Adolescence is the most impressive period of human life not only for physical development but also for the mental, intellectual and emotional development. Maturity is always related to development. Social development of the child is associated with other features of growth. A socially mature person is able to adapt himself successfully in his surroundings. Some social qualities like group compatibility, kindness, sympathy, empathy, emotional adjustability, courtesy and politeness, self confidence, co-operation, leadership and cheerfulness should be developed amidst the society. To study the level of social maturity among the lower secondary school students 200 samples are taken from the Matia block of Goalpara district, Assam where 100 are boys and 100 are girls. Descriptive survey method is used and Social Maturity Scale by Nalini Rao is used for data collection. To study the level and difference of social maturity mean, median, standard deviation skewness, kurtosis and z-test are used to analysis the data.*

Keyword- Social, maturity, secondary school,

1. Introduction

1.1 Background of the Study

Adolescence is the most impressive period of human life not only for physical development but also for the mental, intellectual and emotional development. An adolescent has to cope up himself/herself with the family, school and society which are regarded as a complex task. Besides these complexities an adolescent grows up to the maximum with all the capacities. Adolescent becomes a socially responsible person and emotionally mature for adjustment in the society. Man is a social animal and without society man cannot survive. So, it is the responsibility of every person to develop the social qualities within him/her for better adjustment and it is easy when the person becomes socially mature.

1.1.1 Concept of Maturity

Maturity is the capacity to handle and react to the situation in a proper way. Maturity also comprehends being aware of the correct time and location to behave and knowing when to act, according to the circumstances and the culture of the society one lives in. It is difficult to define in a single sentence. Firstly maturity is to know oneself, one's potentiality, quality, capability etc. A matured person is usually aware when to act, how to act, what to act according to the demands of the situation. It also helps the people to make differentiation between two things that is right and wrong, truth and false, virtue and vice. A person becomes mature according to the age and physical development. Learning and experiences of life are that two things which increases a person's maturity level. It is being one's own individual and that can be attained only by carefully investigating the contents of mind like the ideal of one, role models, path of life and the beliefs, values, morals, religions, self worth etc. Maturity is nothing but to achieve the development of sensibility to ignore the negative factors and to take

right decision in critical situations and to accept the reality. It is an attitude built by experience of a person throughout his life. A matured person can control his emotions in any situation; maturity begins to grow when one can sense his concern for others outweighing his concern for himself.

1.1.2 Social Maturity

Maturity is always related to development. Social development of the child is associated with other features of growth. As the child grows up not only develops in physical, mental, emotional and attitudinal behavior, but side by side with this in his social behavior also. Child's mental development is clearly characterized by the social development. When the child mixes with the other members of his family and society we can learn about the earliest signs of intellect in his behavior. The language he uses also involves intellectual symbols. Language is considered as the principal mode of communication of thoughts and feelings with others. In this way social process begins. If the language ability develops social relations are automatically develops. Similarly, social and emotional problems are linked. Most of the emotional states of the child have social significance and many of the social problems create emotional problems. The end of the maturity marks the growth and development. From the early age maturity of structure and function comes in some aspects of development whereas in other it comes later development comes from maturation and learning (Srivastava, 1987). Social maturity is a long process to be socially mature. Social development is depending upon attainment of social maturity. A socially mature person is able to adapt himself successfully in his surroundings. Some social qualities like group compatibility, kindness, sympathy, empathy, emotional adjustability, courtesy and politeness, self confidence, co-operation, leadership and cheerfulness should be developed amidst the society. A socially mature person should be able to make judgments, decisions and take proper action in face of problems and critical issues. Without conflicting with others one can pursue healthy competition with the people around himself. A person with social maturity is cooperative and he is capable of taking responsibility for his own actions.

The level of social maturity of a person can be judged by taking into consideration the relation between his conduct and the normal adjustment for his age and group viz. motor, emotional and abstract mental control.

1.1.3 Secondary Education in Assam

Education in India as well as in Assam comprises of four stages- Pre-Primary, Elementary, Secondary and Higher Education. Formal education started from the elementary stage and secondary education is the second stage of formal school education. Secondary education is that formal stage of education which covers the adolescence period of an individual of development. Secondary education is like a bridge course between primary and higher education. In India, secondary education is also divided as lower secondary and higher secondary. It comprises the age group 14-16 for lower secondary stage and 16-18 for higher secondary stage. Secondary education occupies a very important role in the educational ladder. After completing secondary education a student can pursue any general, technical, industrial, agricultural and commerce & business education. The progress of a country largely depends on expansion and improvement of secondary education. The success of higher education in the field of science and technology is also dependent on the existence of the co-ordinate system of secondary education which not only identifies the special talent but also provide basic knowledge and information. Secondary education also helps to contribute to the development of habits, attitudes and qualities of character which will enable the citizen to become worthy and responsible for a democratic country. Vocational efficiency which develops productivity for increasing of national income of a country can be met through developing of secondary education properly and in a well organized manner. Another important role of secondary education is to enhance understanding and appreciation of international and national relations. Development of leadership qualities in any field like social, political, industrial and cultural is to be developed during secondary education of Education and training is given in the secondary level to help the students to develop their complete personality in the area of

physical, moral, mental, social and practical. It develops whole into a self disciplined individual who appreciates work and manages time properly. In Assam, Rastriya Madhyamik Shiksha Abhiyan (RMSA) was launched on 2nd March 2009 for universalization of access and improvement of quality of secondary stage of education.

1.2 Need and Importance of Study

Study of social maturity of the learner especially at the lower secondary stage is important because from this stage the student started to develop their learning capability, reasoning power, vocational capability which is helpful to take future decisions of their life. This stage is like a bridge between childhood and adolescence which is regarded as the most crucial stage of human life. So, this stage should be handled carefully. Social maturity helps the students to take proper decisions of their life and also to adjust themselves among the peers, family, society and community. Without social maturity problems may face by the lower secondary school students. So, the researcher has selected to find out the level of social maturity, differences of social maturity in terms of gender of the lower secondary school students of Matia Block of Goalpara District of Assam. This study is important because in the Matia Block of Goalpara District there is no study has been conducted in this particular area and the researcher is interested to study the social maturity of the lower secondary school students.

1.3 Statement of the Problem

The present study has been entitled as “Study on the Level of Social Maturity of Lower Secondary School Students of Matia Block of Goalpara District, Assam.”

1.4 Delimitations of the Study

The study has been undertaken by the researcher has the following delimitations

- i) The study is delimited to the social maturity in the dimension of personal adequacy, interpersonal adequacy and social adequacy of the

lower secondary school students of Matia Block of Goalpara District, Assam.

- ii) The study is delimited to the government lower secondary school of Matia Block of Goalpara District, Assam.
- iii) The study is delimited to the students of class ix of government lower secondary school of Matia Block of Goalpara District, Assam.

1.5 Objectives of the Study

Following objectives are taken for the completion of the study

- i) To study the level of social maturity of the lower secondary school students of Matia block of Goalpara district, Assam
- ii) To study the difference of social maturity of lower secondary school students of Matia block of Goalpara district, Assam in terms of gender.

1.6 Hypothesis of the Study

Following hypothesis is taken for the present study

Hypothesis (1): There is no significant difference of social maturity of the lower secondary school students of Matia block of Goalpara district, Assam in terms of gender

2. Review of Related Literature

2.1 Review of Related Literature on Social Maturity

Kumar & Ritu (2013) studied on “Social Maturity of Senior Secondary School Students in relation to their Personality” and found that there is a positive relationship between social maturity and personality of senior secondary school students. There is

no significant difference between social maturity of male and female secondary school students. There is no significant difference between personality of male and female secondary school students.

Wartyngahah (2013) studied on “A Study on Social Maturity of Secondary School Students in Shillong Town” and found that most of the secondary school students in Shillong Town are having average social maturity i.e. 82% followed by above average category 12.5% below average category 4.5% students and only 1% students are fall under superior category. There is significant difference between social maturity of male and female of secondary school students, the female students having high social maturity than the male counterparts. There is no significant difference between social maturity of urban and rural students of secondary schools. There is no significant difference between social maturity of govt. aided and private unaided secondary school students.

Sevak, D.D. (2016) studied on “ Study of Social Maturity self control and adjustment of higher secondary school students” and found that there is significant difference between Gujarati and English medium and science and arts stream with the dimensions of work orientation, ability to take stress, social commitment, communication and social tolerance in respect of social maturity. There is significant difference between boys & girls with the dimension of work orientation, communication, cooperation and social commitment in respect of social maturity. There is no significant difference between Gujarati & English medium and science & arts stream excluding the dimension of work orientation, ability to take stress, cooperation and social tolerance in respect of social maturity. There is significant difference between Gujarati and English medium and boys & girls with the total level of social maturity in respect of social maturity.

Mishra, A., Dubey S. & Kumari, M. (2017) studied on “A Study on Social Maturity of Adolescent in Sultanpur City” and find that maximum number (66.66%) boys respondent were had high social maturity and (70%) girls respondent were had high social maturity. As per data most of the (68.33%) respondent had high social maturity.

The result shows that majority of boys sample (36.66%) respondent had high social maturity who belonged to the urban area in location and in girls sample (33.33) percent respondent had high social maturity who belonged to the rural area in location.

3. Methodology

3.1 Methods

The researcher has used Descriptive Survey Method for the present study. The study is descriptive in nature. Descriptive studies are more than just a collection of data; it involves in measurement, classification, analysis, comparison and interpretation. So, the investigator chooses the Descriptive Survey Method to collect the valid and reliable data.

3.2 Tool Used

A Social Maturity Scale by Nalini Rao(2018) is used for the present study.

3.2.1 Social Maturity Scale

In this present study the researcher has used the Social Maturity Scale by Nalini Rao (2018) having 90 items and the dimensions are personal adequacy, interpersonal adequacy and social adequacy. The response options available for the items are: strongly agree, agree, disagree and strongly disagree with the scores of 4, 3, 2 and 1 for positive items and 1, 2, 3 and 4 for negative items respectively. For determining the reliability of Social Maturity Scale, test-retest reliability was applied and reliability was found to be .98.

3.3 Population

The students of lower secondary stage of government high school of Matia block of Goalpara district of Assam are selected as the population. In the Matia block all total 13 high schools are there and 1929 students are studying at class ix where 900

is boys and 1029 is girls and the researcher has taken the class IX students of Matia block as a population.

3.4 Sample

In this study 200 samples are taken from which 100 is boys and 100 is girls by using purposive sampling method from the Government High School of Matia block of Goalpara district, Assam.

4. Data Analysis and Interpretation

4.1 Objective Wise Analysis

The researcher studied level of social maturity of the lower secondary students with the help of mean, median, standard deviation, skewness and kurtosis. Difference of social maturity in terms of gender is also analyzed with the help of z-test. Objective wise analysis of data is presented below:

4.2. Objective 1

To study the level of social maturity of the lower secondary school students of Matia block of Goalpara district, Assam.

In order to analyze the first objective percentage values are calculated to study the overall level of social maturity of lower secondary school students of Matia block of Goalpara district, Assam as shown in table 4.1

Table 4.1: Percentage of Overall Social Maturity of Lower Secondary School Students of Matia Block of Goalpara District, Assam.

Sl. No.	Levels	No of Students	Percentage
1	Very High Level Maturity	0	0%
2	High Level Maturity	13	6.5%
3	Above Average Level Maturity	34	17%

4	Average Level Maturity	114	57%
5	Below Average Level Maturity	9	4.5%
6	Low Level Maturity	15	7.5%
7	Very Low Level Maturity	15	7.5%

Source: Field Survey 2019

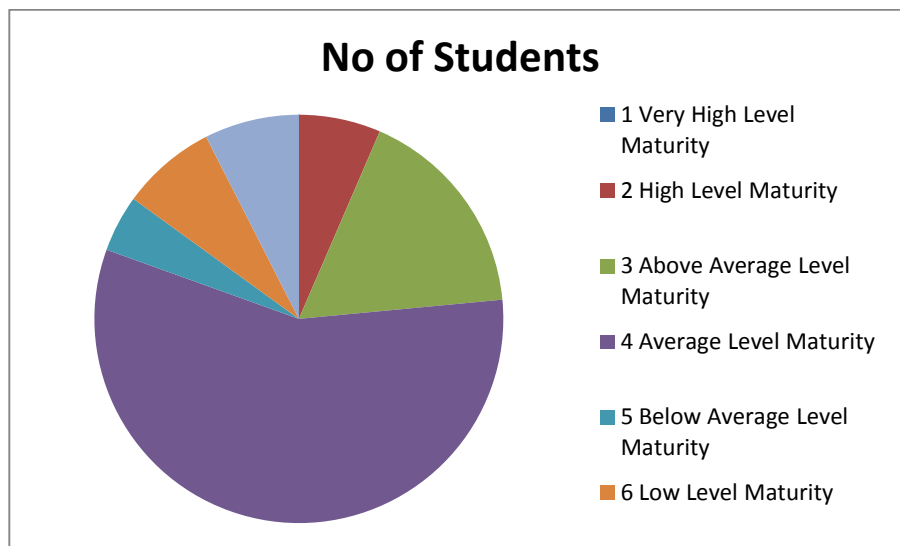


Figure 4.1: Percentage of Overall Level of Social Maturity of Lower Secondary School Students of Matia Block of Goalpara District, Assam

Table 4.2: Level of social maturity of lower secondary school students of Matia block of Goalpara district, Assam

N	Mean	Median	Standard Deviation	Skewness	Remarks	Kurtosis	Remarks
200	212.76	221	36.68	-0.93	Negatively Skewed	0.68	Platykurtic

Source: Field Survey 2019

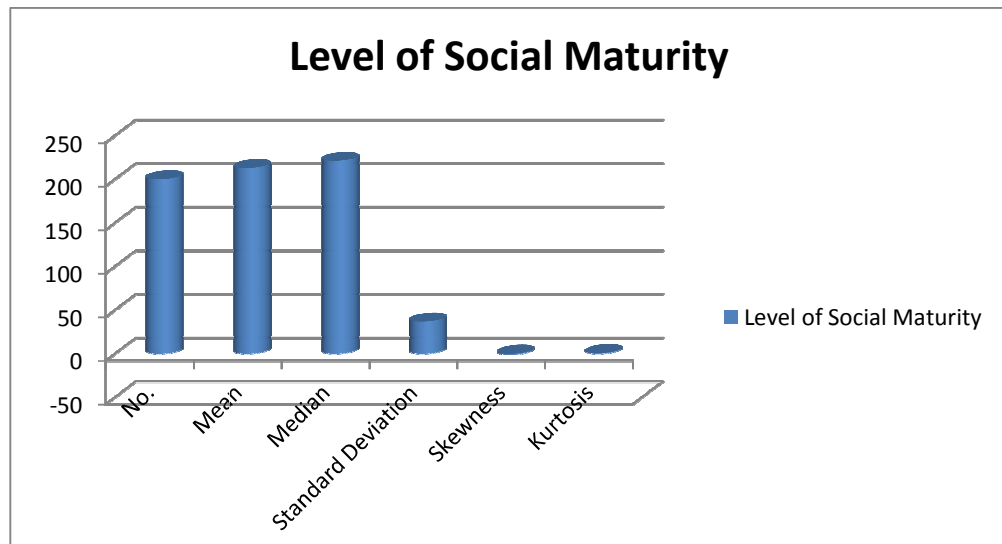


Figure 4.2: Graphical Representation of Level of Social Maturity of Lower Secondary School Students of Matia Block of Goalpara District, Assam

From the above table regarding the first objective that is to study the level of social maturity of lower secondary school students of Matia block of Goalpara district, Assam and it has found that mean of 200 samples of lower secondary school students' is 212.76 and median is found 221. Standard Deviation for the same sample is 36.68. The divergence from normality i.e. skewness and kurtosis are also analyzed for the same sample. Value of Skewness is found -0.93 and it is negatively skewed from the normality that means the Normal Probability Curve is inclined more to the left. Value of kurtosis is found 0.68 and the curve is Platykurtic and it means there are few individuals whose scores are near to the average score for the particular sample group and the Normal Probability Curve representing such a distribution becomes flattened in the middle.

4.3 Objective 2

To study the difference of social maturity of lower secondary school students of Matia block of Goalpara district, Assam in terms of gender.

In order to study the difference of social maturity of boys and girls of lower secondary school students of Matia block of Goalpara district, Assam the following null hypothesis has been formulated.

Hypothesis (1)

There is no significant difference of the social maturity of the lower secondary school students of Matia block of Goalpara district, Assam in terms of gender.

In order to test the formulated null hypothesis the mean, standard deviation and z test of boy's and girls' social maturity are calculated.

Table 4.3: Difference of Social Maturity between Boys and Girls of Lower Secondary School Students of Matia Block of Goalpara District, Assam

Gender	No of Sample	Mean	Standard Deviation	Z-test	Critical Value	Significance at 0.01 level	Hypothesis
Boys	100	211.53	40.85	- 0.47	2.58	NS	Accepted
Girls	100	213.99	32.13				

Note: NS indicates not significant

Source: Field Survey (2019)

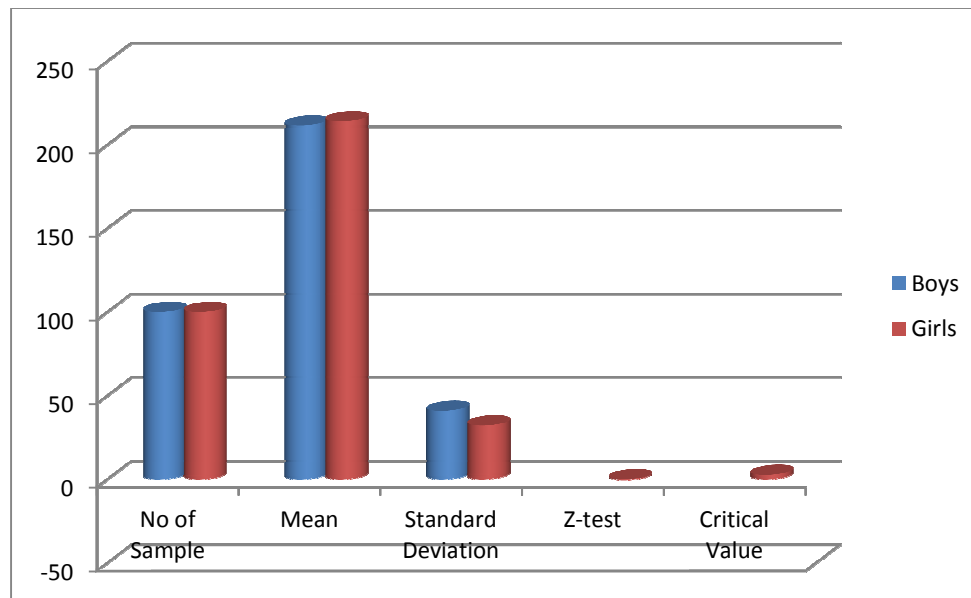


Figure 4.3: Graphical Representation of the Difference of Boys and Girls of Social Maturity of Lower Secondary School Students of Matia Block of Goalpara District, Assam.

The above table no 4.3 shows that mean and standard deviation for boys is 211.53 and 40.85 respectively. Again mean and standard deviation for girls is 213.99 and 32.13 respectively. The calculated z-test value is -0.47 which is much less than critical value 2.58 at 0.01% level of significance and it is not significant. Hence, the null hypothesis is accepted and it can be conclude that there is no significant difference in social maturity between boys and girl students of lower secondary school of Matia block of Goalpara district, Assam.

5. Findings and Conclusion

5.1 Findings of the Study

The researcher comes to the findings and discussion after analyzing the data. The main objectives of the present study are to find out the level and difference of

social maturity of lower secondary school students of Matia block of Goalpara district, Assam. The major findings are-

- The scores of lower secondary school students of Matia block of Goalpara district, Assam regarding social maturity was found negative value of skewness (-0.93) and it is negatively skewed from the normality that means the Normal Probability Curve is more inclined to the left in the distribution of social maturity. It therefore reveals that the lower secondary school students of Matia block of Goalpara district of Assam possess average level of social maturity.
- The kurtosis score of lower secondary school students of Matia block of Goalpara district regarding social maturity was found positive value (0.68) which is greater than .263. So the distribution of scores of social maturity is Platykurtic and it means there are few individual whose scores are near to the average score and represent a flattened distribution in the middle.
- The z-test value of boys and girls of lower secondary school students of Matia block of Goalpara district of Assam regarding social maturity is found (0.47) which is much less than the critical value (2.58) at 0.01% level of significance and it is not significant.
- Hence, it is found from the study that there is no significant difference of social maturity of lower secondary school students of Matia block of Goalpara district, Assam in terms of gender as the null hypothesis is accepted.

5.3 Discussion of the Study

This study shows that the most of the lower secondary school students of Matia block of Goalpara district, Assam have average level of social maturity. This study is supported by related studies conducted by Wartyngah(2013) had found average social maturity among the secondary school students of Shillong town. Again this study is not supported by the related study conducted by Mishra, A., Dubey, S. & Kumari, M. (2017) had found high social maturity among the adolescents in Sultanpur city. This

study has found that there is no significant difference between the male and female students regarding social maturity of lower secondary schools of Matia block of Goalpara district of Assam and it is supported by the related study conducted by Kumar, D. & Ritu (2013) has found no significant difference between social maturity of male and female secondary school students. This study is not supported by the related study conducted by Sing, R., Pant, K. & Laitonjam, V.(2013), Wartyngah (2013), Sevek, D.D. (2016), Mishra, A., Dubey, S. & Kumari, M. (2017) and found that there was significant difference between male and female regarding social maturity.

5.4 Conclusion

The findings and discussion of the study reveals that most of the lower secondary school students have average level of social maturity. In the distribution of the social maturity most of the scores are high and average score and the Normal Probability Curve is negatively skewed which is more inclined to the left. From the study it is found that there is no significant difference of social maturity of lower secondary school students of Matia block of Goalpara district, Assam in terms of gender.

BIBLIOGRAPY

Books

Agarwalla, S. (2008), *Historical Perspective of Indian Education*, Panbazar, Guwahati-1: Bookland.

Bandura, A. (1977), *Social Learning Theory*, Upper Saddle River, N.J.:Prentice Hall.

Best, J. W. & Kahn, J. V. (2002), *Research in Education*, New Delhi: Prentice Hall of India.

Garrett, H.E. (2011) *Statistics in Psychology and Education*, New Delhi: Paragon International Publishers.

Koul, L. (2011), *Methodology of Educational Research*, New Delhi: Vikash Publication.

Mangal, S.K. (2018), *Statistics in Psychology and Education*, Delhi: PHI Learning Private Limited.

Mathur, S. S. (2011), *Educational Psychology*, Agra: Shri Vinod Pustak Mandir.

Mathur, S.S. (2011), *Social Psychology*, Agra: Agarawal Publications.

Saha, K. (2012), *Statistics in Education and Psychology*, New Delhi: Asian Books Private Limited.

Srivastava, D.N. (1987), *General Psychology*, Agra: Vinod Pustak Mandir.

Journals

Kumar, D.& Ritu. (2013), Social Maturity of Senior Secondary School Students in relation to their Personality. *AJMR Asian Journal of Multidimensional Research*, Vol.2 Issue 8| ISSN: 2278-4853| August 2013.

Mishra, A., Dubey, S. & Kumari, M. (2017), A Study on Social Maturity of Adolescent in Sultanpur City. *International Journal of Home Science*, ISSN: 2395-7476| April 2017.

Sevek, D.D. (2016), Study of Social Maturity Self Control and Adjustment of Higher Secondary School Students, retrieved from <https://sodhganga.inflibnet.ac.in> on 29th March

Wartyngah, S. (2013), A Study on Social Maturity of Secondary School Students in Shillong Town, retrieved from <https://shodhganga.inflibnet.ac.in> on 29th March

Websites

<https://www.theodysseyonline.com>

<https://www.reserachgate.net>

www.psychologydiscussion.net

[https://en.m. Wikipedia.org](https://en.m.wikipedia.org)

<https://sodhganga.inflibnet.ac.in>

<https://www.liveyourtruestory.com>